

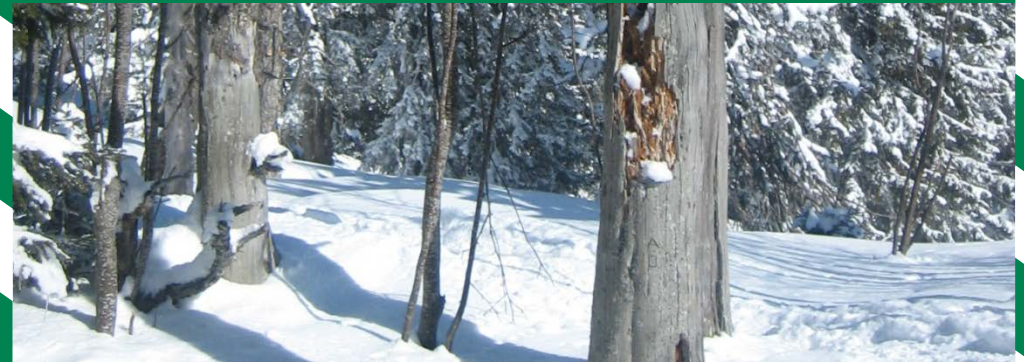
Rules along the trails

1. **Respect the designated protected game areas:** This is where the wild animals go for protection and to live undisturbed.
2. **Stay on the marked forest trails and paths:** This allows the wild animals to grow accustomed to the presence of humans.
3. **Avoid the forest edge and snow-free clearings:** These are places where the animals seek refuge.
4. **Keep your dogs on the leash, especially in the forest:** Wild game flee in fear of free-roaming dogs.
5. **Pay attention to the signs and postings placed throughout the area:** These are to inform you of correct and proper conduct.



For further information go to www.ow.ch or www.nw.ch (only in German)
→ Keyword: Wildruhegebiete

PROTECTED GAME AREAS



Welcome to Engelberg!

Chamois, deer and grouse, as well as many other types of animals, live in this beautiful natural area. Most of the time these creatures hide in the areas along or very near the trails frequented by skiers, hikers and other winter sports enthusiasts. In order to provide a safe and undisturbed haven for these animals, the Cantons of Obwalden and Nidwalden mapped zones and determined regulations. These ensure the protection of local game and wildlife area .

Protective restrictions are in effect from
1. December until 30. April.



During this time period only marked trails and areas within the protected zones (as marked on the map) may be used or accessed. Leaving these designated trails is strictly forbidden.

Dogs must be kept on the leash.

Violations are punishable.

STOP

STOP

STOP



protected game area from 1. Dezember - 30. April



prescribed trail



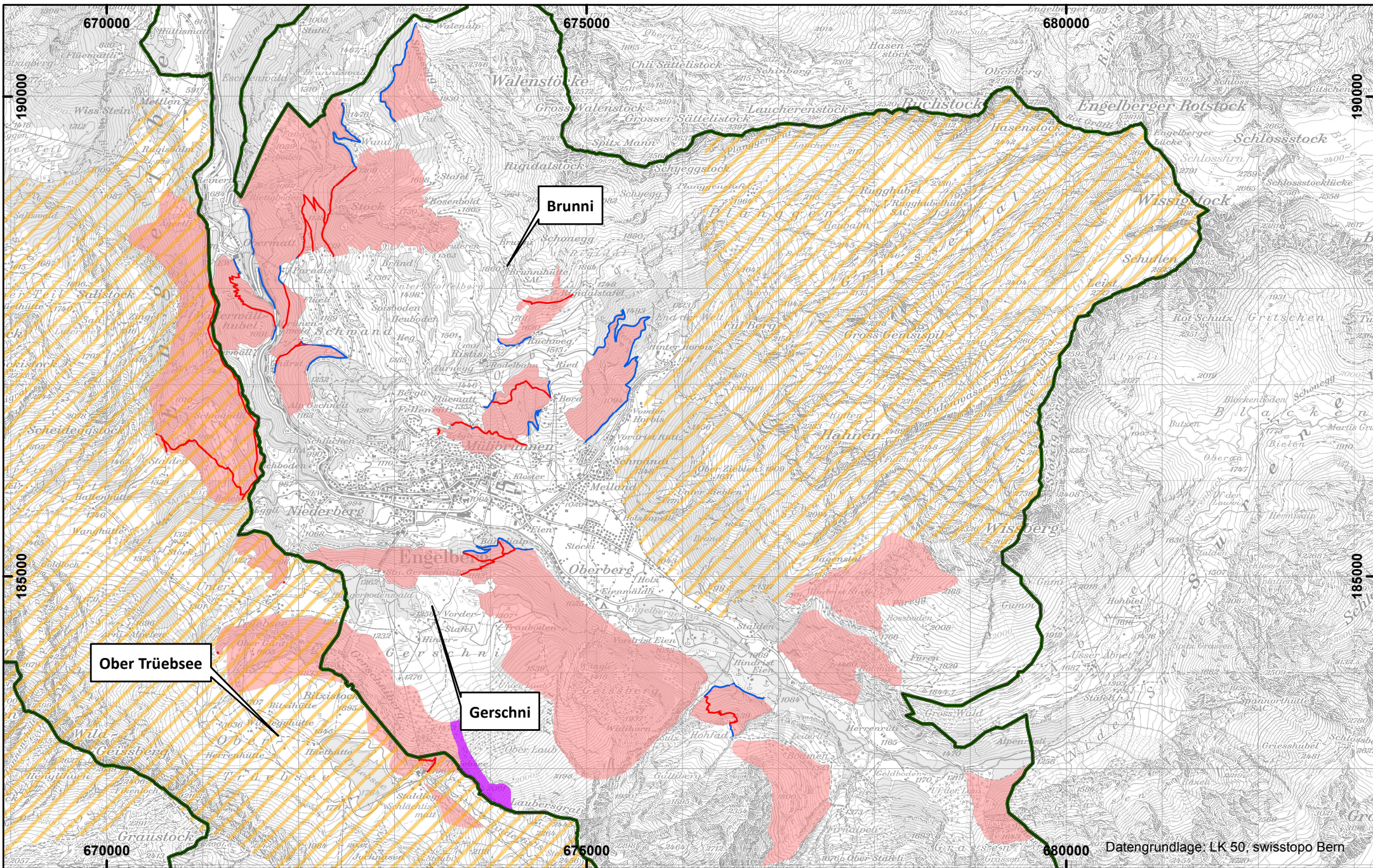
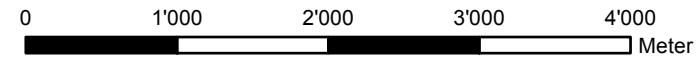
prohibited zone Langwand



bounding trail



federal no-hunting area



Brunni

Ober Trüebsee

Gerschni